

# Toyota 4Cyl W/Spark 5V Mag

Harness Required: E11 Ver 1.0 & E04 Ver 1.0

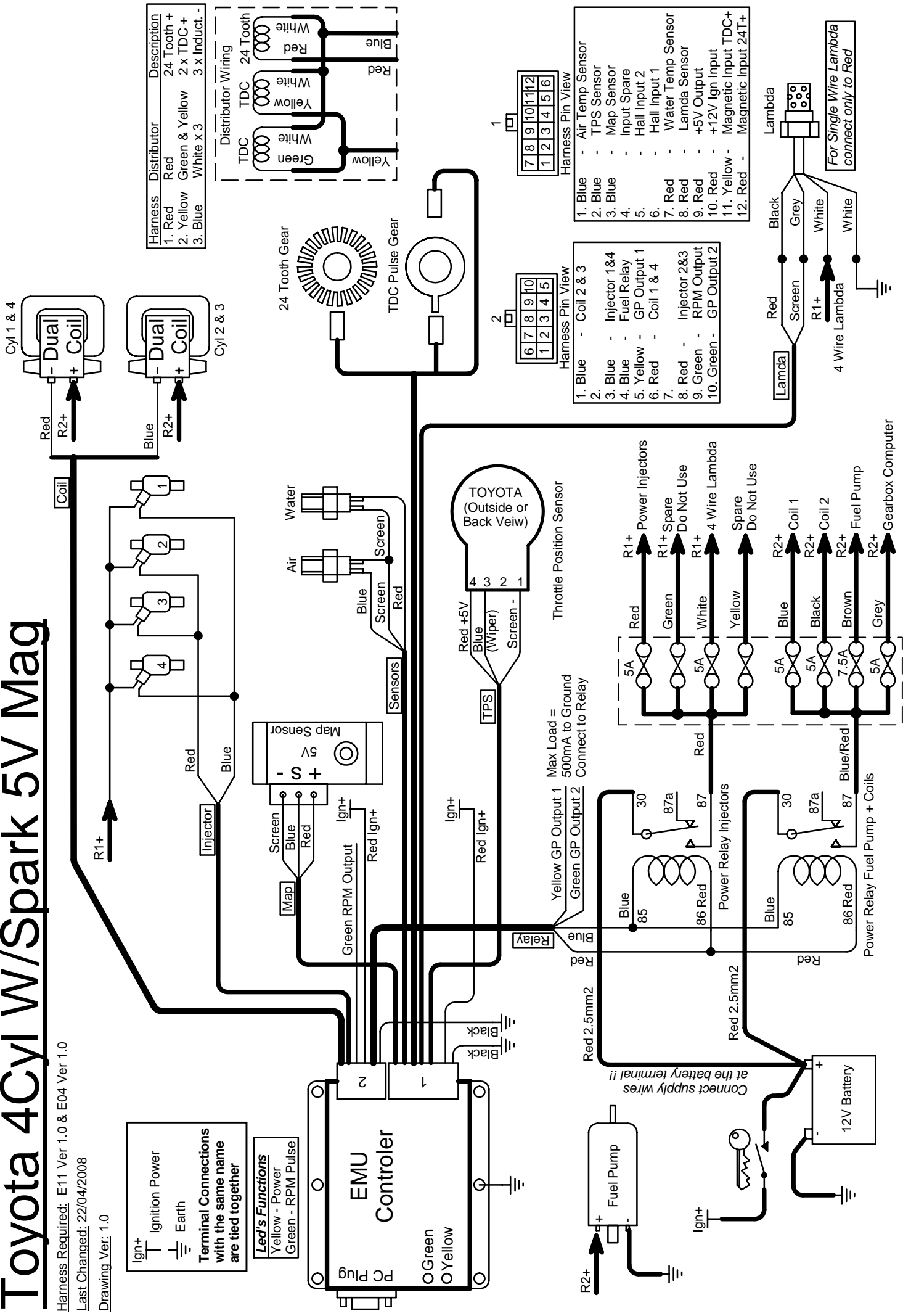
Last Changed: 22/04/2008

Drawing Ver: 1.0

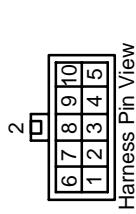
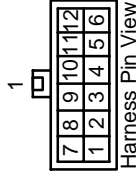
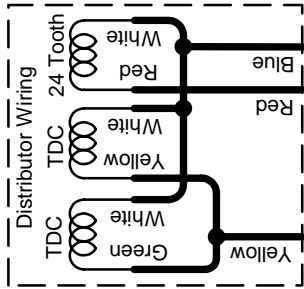
Ign+ Ignition Power  
Earth

**Terminal Connections with the same name are tied together**

**Led's Functions**  
Yellow - Power  
Green - RPM Pulse

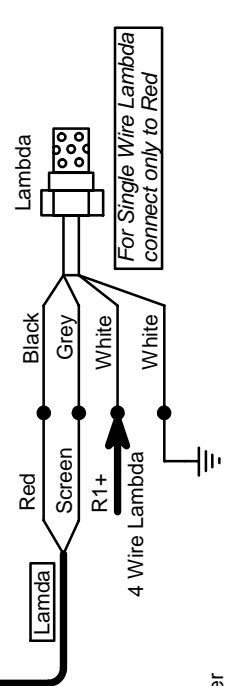


Harness	Distributor	Description
1. Red	Red	24 Tooth +
2. Yellow	Green & Yellow	2 x TDC +
3. Blue	White x 3	3 x Induct. -



1. Blue - Air Temp Sensor
2. Blue - TPS Sensor
3. Blue - Map Sensor
4. Blue - Input Spare
5. Yellow - Hall Input 2
6. Red - Hall Input 1
7. Red - Water Temp Sensor
8. Red - Lambda Sensor
9. Red - +5V Output
10. Red - +12V Ign Input
11. Yellow - Magnetic Input TDC+
12. Red - Magnetic Input 24T+

1. Blue - Coil 2 & 3
2. Blue - Injector 1&4
3. Blue - Fuel Relay
4. Yellow - GP Output 1
5. Red - Coil 1 & 4
6. Red - Injector 2&3
7. Red - RPM Output
8. Green - GP Output 2



TOYOTA (Outside or Back View)

Max Load = 500mA to Ground  
Connect to Relay

